


A woman with long brown hair is relaxing in a hot tub. She is lying back, resting her head on the edge of the tub, and looking towards the right. The hot tub is dark-colored with a wooden-grain finish on the lower half. The water is bubbling. The background shows a green lawn and a dense line of trees under a warm, golden sunset sky. The PDC spas logo is overlaid on the left side of the image.

PDC
spas

HOT TUB COLLECTION

A large, rectangular hot tub with a waterfall feature on the right side is the central focus. The water is bubbling and splashing. In the background, there is a green field with a dark wooden fence. Two horses are grazing in the field. The background is filled with trees showing autumn foliage in shades of green, yellow, and red. A mountain is visible on the left side. The sky is overcast with soft light. The text "BRINGING WELLNESS HOME" is overlaid in the upper right corner in a white, sans-serif font.

BRINGING
WELLNESS
HOME

A woman with blonde hair, wearing a blue tank top, is relaxing in a black hot tub. The hot tub is set in a stone wall with a stone ledge behind it. The water is bubbling and spraying from several jets. The background features lush greenery, including tall grasses and a large bush. The scene is set outdoors, likely in a backyard or garden.

" I purchased a PDC Spas Fiji hot tub and it was the best purchase that I have ever made. My husband and I sit in the hot tub every night and relax together. We often enjoy coffee together before we start our day. Thank you PDC Spas, we would never go to another spa company!"

- C.L., Fiji owner.



STAY HAPPY.
STAY HEALTHY.
AT HOME.



Year Round Backyard Fun.

Transform your backyard into an outdoor space that will revitalize your home, encourage time with family and friends and promote wellness. Of all the home improvement projects you could select, adding a hot tub is one of the most rewarding with year round use and wellness benefits.

Watch your living and entertaining space expand as you use your hot tub in any season. View a brilliant sunrise, stargaze or conveniently entertain family and friends from the privacy of your own home.

Family Time

With packed calendars and busy schedules, it's easy to feel like family time is missing the quality you crave. The warm, swirling water of a hot tub provides the perfect opportunity to spark conversation, be playful and reconnect with family and loved ones. Feel more involved than ever before, by simply taking time to slow down, together.

When surrounded by all the comforts of home, it is easier than ever to treat yourself to rest and relaxation or gather everyone together for a night of fun!



Feeling Better Never Felt So Good.

Whether it is diminishing the stresses of everyday life, relieving aching joints and stiff muscles or simply getting a better night's sleep, a soak in your PDC hot tub assures a healthier, happier you. Each spa features a variety of therapeutic jets, strategically positioned to target specific muscle groups.

Revive your weary legs

Knead tired hamstring and calf muscles with a pulsating water action or let perfectly positioned hip jets soothe away the day's tension in a deep contoured therapy seat. From hip to toes, and everything in between, every PDC Spas hot tub offers a full body massage that truly sweeps you off your feet.

Hydrotherapy Where You Need it Most

Adjustable and interchangeable jetting allows you to customize your massage without ever leaving the hot tub. Simply twist an UltraMassage™ Selector to raise or lower the intensity of your massage or turn to relocate the jet to your desired seat or position. Each seat delivers a massage unique to only you.

Relieve Tense Neck and Shoulders

Soft air-filled pillows cradle your head and neck. Massaging neck and shoulder jets improve blood circulation, relieve headache pain and gently dissolve tension.

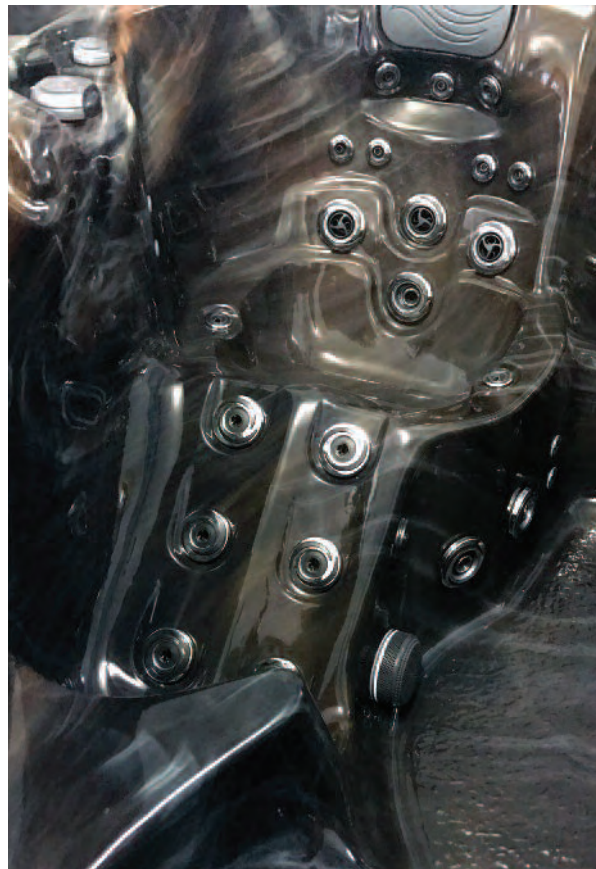
Natural Oxygen Rejuvenation

Like a soft fingertip Swedish massage, the PDC exclusive Air'assage™ design caresses every inch of your body for a complete feeling of relaxation. Unlike deep tissue action, the Luxury Series Air'assage™ delivers soft, soothing oxygen bubbles to boost skin cell rejuvenation and energy levels.

Invigorate Tired Feet

Reflexology, a widely practiced form of massage therapy treating major organ nerves found in the feet, is proven to heal and bring the body into balance. Large, powerful well jets deliver a healing foot massage.





Experience Excellence.

Spa ownership means different things to different people. Whether you want to improve your outdoor living space, escape from daily routines, rejuvenate your mind and body, improve your health and wellness, enjoy quality time with friends and family or treasure much needed time alone, PDC Spas has a hot tub model ideal for you and your family.

Performance

At PDC Spas, we are passionate about what we build. Our products are built smart, built strong and built to last by skilled craftsman right here in America. We purposely design our spas to deliver exceptional comfort, energy efficiency and high performance. PowerFlo™ filtration system design, Air'assage™ hydrotherapy and TemperLok™ heat trapping systems set PDC spas at a higher level for consistent flawless operation.

Design

Each of our spa model series offers a distinct level of value and features. Every feature from the nighttime lighting aura to powerful innovative jetting is built to exceed your highest expectation in spa ownership.

Detail

Our eye for detail knows no bounds. For as beautiful as your hot tub is on the outside, the details behind every body conscious contour are meticulously crafted, appealing to all your senses.

Craftsmanship

We are committed to stand behind our products and support our customers. You can count on a hot tub that is built to last, supported by comprehensive warranties and responsive customer service.



Energy Saving Innovations.

TemperLok™, a green-minded PDC Spas innovation, ensures your hot tub is warm and ready in any season. Engineered to reduce heat loss, this exclusive design traps warm air from pump operation between insulated cabinet walls and the TemperBase™ floor creating a “thermos” effect. This recycled heat warms the shell within, reducing energy consumption and lowering your operating costs.

This PDC Spas exclusive, no foam design makes our spas light in weight for easy installation and more efficient, economical servicing. Cabinet sidewalls are quickly removed to access equipment and easily replaced after servicing with no compromise to the TemperLok™ design. Enjoy your PDC spa for years to come, knowing confidently that it is maintained at the same high level of efficiency as the day it was made.

Exceeding Performance Standards

Our product line meets or exceeds the industry energy standards in compliance with the strict California Energy Commission (CEC) Title 20 energy use testing. Our TemperLok™ insulation design, thermal locking cover, high power - low energy pumps, LED lighting and programmable digital controls make our hot tubs the proven economical choice.

www.pdcspas.com/performance/energy-efficiency

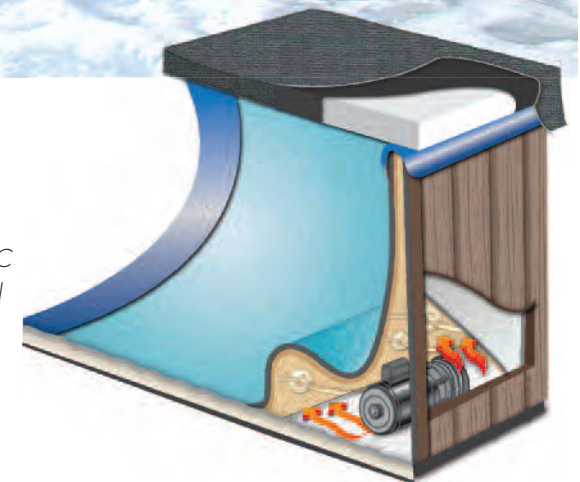
AccuLok™ Hot Tub Covers

A PDC exclusive, AccuLok™ hot tub covers feature breakthrough technology. Our innovative hem design prevents heat escape for significant energy savings and a proprietary core material resists water absorption for a cover that remains lightweight and easy to use. Safety locks, 7 year warranty and ASTM approved.



TemperLOK
heat isn't all you're saving...

TemperLok™, a green-minded PDC Spas innovation, recycles trapped warmed air from waste heat to efficiently keep your hot tub warm and ready in any season.



"Our PDC spa has added a sense of relaxation and beauty, completing our outdoor space. No matter the season, our PDC spa is warm, wet and wonderful! We talked about getting a spa for 15 years! Now we ask ourselves—why did we wait so long?"

- K.D., Bali owner.



Polished clean water is now ready to be treated with EverPure ozone before returning to spa, crystal clear.

Powerful jet pump pushes pressurized water through the PowerFlo filtration for maximum cleaning.



Easy access and neatly hidden from view.

PowerFlo

Care Made Simple.

Clean, clear water is effortless with our proven effective PowerFlo™ filtration system. While others pull dirty water over open, unattractive filters, our unique filtration design works in conjunction with the jet pumps; powerfully pushing dirty water through an easy to reach, out of sight pleated filter. Used water and debris is captured through surface and floor suction, filtering your spa from top to bottom effectively trapping pollutants. Reliable and virtually self-maintaining, all you see is polished, crystal clean water returned to your hot tub; no muss, no fuss.

EverPure™, Natural as Rain Water

The PDC EverPure™ ozone system produces pure ozone, nature's powerful oxidizer continuously destroying organic and inorganic contaminants instantly. The EverPure system is cleansing your hot tub water whenever the pump is filtering, is completely silent and costs pennies a day to operate. Ozone is environmentally safe breaking down to pure oxygen after its work is done. Your spa water is scrubbed clean with PowerFlo filtration, combined with EverPure ozone, and returned sanitized through the jetting system. All you are left with is purified spa water and a clean, "after rain" fresh scent.

EverLite™, Peace of Mind

Exclusive to PDC Spas, our EverLite™ indicator lets you know your spa is clean and inviting. A quick glance at the cabinet mounted light will assure you the EverPure™ ozone is hard at work keeping your hot tub sanitized and pure.

In.Clear, Easy to Use and Built to Last

The in.Clear salt based system offers efficient water sanitization. The in.Clear generates and releases bromine into the spa water, rapidly destroying contaminants. Add the convenient BromiCharge salt at a simple start-up process and the in.Clear takes care of producing the bromine sanitizer.

Light Up The Night.

Light up the night for your much deserved after dark relaxation with the PDC Spas LED lighting systems. Choose a slow rotating prism of color or select your favorite tone to perfect your evening retreat in any PDC hot tub model.

MotionGlow™ Lighting

Set the warm swirling water aglow with soft color from an underwater LED light. Choose a slow rotating prism of tones or your favorite color to best match your nighttime relaxation mood. Standard feature on all PDC Spa hot tub models.

Prism Lighting™

Entertain your senses with a collection of soft glowing lights; MotionGlow™, six LED underwater pinlights and two lit cascading waterspouts. Choose from an array of striking colors to heighten your Premium Series spa enjoyment.

Halo Lighting™

All Luxury Series hot tub models enhance your nighttime relaxation with up to twelve LED underwater pinlights and three lit, cascading waterspouts for a tranquil sound and soothing ambiance.

Allure2™ Lighting

The optimum in hot tub lighting, this optional Luxury Series feature adds LED lit cup holders, air controls, and UltraMassage™ controls setting the topside aglow with color. Four brilliant LED corner sconces wrap your Luxury spa model in warm light completing your evening relaxation experience.





Relaxation To New Heights.

SoundStream™ Audio System

Our SoundStream™ audio system enhances your spa experience with marine-grade speakers and transducers delivering streaming music with Bluetooth® wireless technology. The SoundStream system includes an internally mounted subwoofer enhancing low range bass and volume. Finger-touch operation at spa side with our touch screen digital controls.


in.k1000 Touch Screen Control

The eye-catching in.k1000 touch screen control lets you to experience your Luxury series spa in a fun, new way. Colorful, interactive display icons make operation of your spa and settings simple, even with wet fingertips. All of your main spa functions are conveniently displayed on the opening screen for quick, easy one-touch operation.

in.Touch2 Control

In.Touch wireless control delivers spa operation at your fingertips. Turn any feature on and off, adjust temperature, change filtration modes, set customized themes – all controlled from an app on your smart phone or tablet anywhere there's an internet connection.





"I do not normally write to a business, but I am so "blown away" by the quality of the spa I purchased I felt I had to let you know. I purchased my PDC spa about five years ago and use it regularly twelve months a year. It operates as well now as when I first purchased it. I am very satisfied and happy I purchased a PDC spa. You are a five star company."

- S.S., Biscayne owner



Quality You Can Count On.

Every PDC spa model, from beginning to end, is built by United States craftsmen right here at home. Our attention to detail, commitment to the American worker and respect for our environment makes PDC stand above other spa manufacturers. Production begins with durable cast acrylic sheet in your choice of rich color. Units are then backed with multiple layers of hand-rolled fiberglass and non-filled resins, for a spa that is both beautiful and exceptionally strong. So strong that every PDC spa shell can actually stand on its own. Other manufacturers rely on framing for hot tub shell support. That support could be metal, wood or even foam. At PDC we build our spas to support themselves, choosing not to cut corners during the production process. PDC is so confident in their construction they warrant up to 35 years of uncompromised structural integrity. Our virtually carefree PermaWood™ cabinet is for looks and good looks only, not to support or strengthen the spa shell.

Strength From Within

The focus at PDC since 1957 is to build a product with long-lasting performance and dependability; a durable product engineered with customer satisfaction in mind. Thousands of PDC customers, having owned their hot tub for decades, are confident this fine product has met their home relaxation expectations and will continue to perform for years to come.

Customer Care Proud

Over the years, PDC has built a reputation on quality products and standing behind what we sell. Our factory representatives and staff go above and beyond to personally assure customer satisfaction. PDC employees are dedicated and experienced with tenure approaching thirty years.



Luxury Series

The Luxury Series is equipped with enriched performance and exclusive attributes making this collection the ultimate spa experience. In addition to the innovative features such as the TemperLok™ heat trapping design, reliable and convenient PowerFlo™ filtration system and exceedingly strong spa shell construction, the Luxury Series offers uncompromising therapeutic relaxation for you and your family assuring satisfaction for years to come.

Luxury Enhanced Performance

- | | |
|-----------------------------|-------------------------------|
| Air'assage™ Therapy | PowerFlo™ Filtration |
| Multi-Action Jet System | UltraMassage™ Selector |
| EverPure™ Ozone w/EverLite™ | AccuLok™ Cover |
| Halo LED Lighting™ | Accenture™ Designer Cabinet |
| (3) Cascading Water Spouts | TemperLok™ & TemperBase™ |
| 35 Year Structural Warranty | in.k1000 Touch Screen Control |

Luxury Exclusive Add-Ons

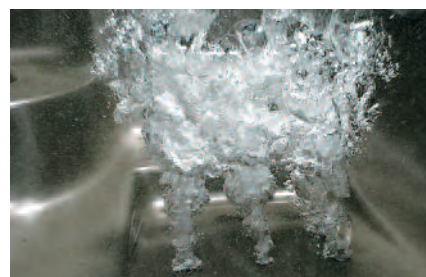
- | | |
|--------------------------|----------------------------|
| in.Clear Water Treatment | in.Touch2 Wireless Control |
| Allure2™ Lighting | SoundStream™ Audio System |



Accenture™ Designer Cabinet



Cascading Water Spout Trio



Air'assage™ Therapy



in.k1000 Touch Screen Control Center



Discover paradise in the Bali. Perfect for the big family and backyard entertaining, the Bali offers seven comfortable seats. A captain's chair massages you from your neck to your toes, while your guests enjoy the comfort of open seating.

Model Specs

- 7 Seats
- 94" x 94" x 39"
- 650 Gallons, 2,460 Liters
- 908 lbs, 412 kg. (Dry)
- 6,108 lbs, 2,749 kg. (Wet)
- 143 Reflection Stainless Steel Jets
- 70 Hydrotherapy Jets, 73 Air Jets
- UltraMassage™ Selector
- Air'assage™ Therapy
- (3) Pumps 10HP Peak (5HP Continuous)
- 1.5HP Bubbler

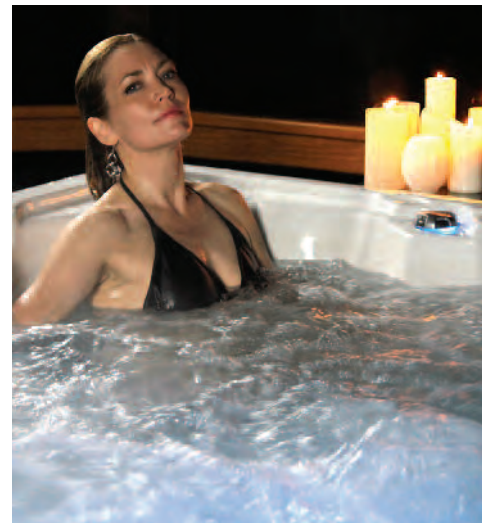
Bali

Standard Features

- (3) Cascading Spouts
- in.k1000 Touch Screen Control
- TemperLok™ & TemperBase™
- AccuLok™ Cover
- PowerFlo™ Filtration
- EverPure™ Ozone w/EverLite™
- Halo LED Lighting™
- All Acrylic Shell Colors
- Accenture™ Designer Cabinet

Optional Features

- in.Touch2 Wireless Control
- in.Clear Sanitation System
- SoundStream™ Audio System
- Allure2™ LED Lighting



In the Biscayne you will feel worlds away in the comfort of your own backyard. Five contoured seats including a lounge sculpted to cradle and support. Arm rests and wrist jets are sure to please while the cascading waterfall, unique to the Biscayne, soothes the senses.

Model Specs

- 5 Seats
- 90" x 79" x 37"
- 325 Gallons, 1,230 Liters
- 800 lbs, 363 kg. (Dry)
- 3,670 lbs, 1,665 kg. (Wet)
- 96 Reflection Stainless Steel Jets
- 66 Hydrotherapy Jets, 30 Air Jets
- UltraMassage™ Selector
- Air'assage™ Therapy
- (3) Pumps 10HP Peak (5HP Continuous)
- 1.5HP Bubbler

Biscayne

Standard Features

- (3) Cascading Spouts
- in.k1000 Touch Screen Control
- TemperLok™ & TemperBase™
- AccuLok™ Cover
- PowerFlo™ Filtration
- EverPure™ Ozone w/EverLite™
- Halo LED Lighting™
- All Acrylic Shell Colors
- Accenture™ Designer Cabinet

Optional Features

- in.Touch2 Wireless Control
- in.Clear Sanitation System
- SoundStream™ Audio System
- Allure2™ LED Lighting



Come home to happiness with the Fiji and its crowd-pleasing spacious interior. The whole gang can relax together on contoured seats, a wide lounge, or even a captain's chair with this diverse design. There is something for everyone in the Fiji.

Model Specs

6 Seats

94" x 94" x 39"

525 Gallons, 1,987 Liters

865 lbs, 392 kg. (Dry)

5,065 lbs, 2,279 kg. (Wet)

115 Reflection Stainless Steel Jets

71 Hydrotherapy Jets, 44 Air Jets

UltraMassage™ Selector

Air'assage™ Therapy

(3) Pumps 10HP Peak (5HP Continuous)

1.5HP Bubblers

Fiji

Standard Features

(3) Cascading Spouts

in.k1000 Touch Screen Control

TemperLok™ & TemperBase™

AccuLok™ Cover

PowerFlo™ Filtration

EverPure™ Ozone w/EverLite™

Halo LED Lighting™

All Acrylic Shell Colors

Accenture™ Designer Cabinet

Optional Features

in.Touch2 Wireless Control

in.Clear Sanitation System

SoundStream™ Audio System

Allure2™ LED Lighting



A wave of relaxation greets you in the perfectly sized Malibu. Designed to cradle all figures comfortably, the uniquely sloped lounge and four body hugging seats let you unwind in style. Enjoy full body relief with mindfully placed therapy jets.

Model Specs

5 Seats

82" x 82" x 37"

400 Gallons, 1,514 Liters

635 lbs, 288 kg. (Dry)

3,835 lbs, 1,740 kg. (Wet)

97 Reflection Stainless Steel Jets

57 Hydrotherapy Jets, 40 Air Jets

UltraMassage™ Selector

Air'assage™ Therapy

(2) Pumps 10 HP Peak (5HP Continuous)

1.5HP Bubblers

Malibu

Standard Features

(3) Cascading Spouts

in.k1000 Touch Screen Control

TemperLok™ & TemperBase™

AccuLok™ Cover

PowerFlo™ Filtration

EverPure™ Ozone w/EverLite™

Halo LED Lighting™

All Acrylic Shell Colors

Accenture™ Designer Cabinet

Optional Features

in.Touch2 Wireless Control

in.Clear Sanitation System

SoundStream™ Audio System

Allure2™ LED Lighting



Enjoy a relaxing conversation with a friend or loved one in the dual lounges that face each other. Take the corner seat and feel tensions melt, knots disappear and alleviate pain in your neck, back, shoulders and hip areas. The Reno has it all!

Model Specs

6 Seats

86" x 86" x 37"

375 Gallons, 1,420 Liters

705 lbs, 320 kg. (Dry)

3,705 lbs, 1,667 kg. (Wet)

117 Reflection Stainless Steel Jets

66 Hydrotherapy Jets, 51 Air Jets

UltraMassage™ Selector

Air'assage™ Therapy

(3) Pumps 10HP Peak (5HP Continuous)

1.5HP Bubbler

Reno

Standard Features

(3) Cascading Spouts

in.k1000 Touch Screen Control

TemperLok™ & TemperBase™

AccuLok™ Cover

PowerFlo™ Filtration

EverPure™ Ozone w/EverLite™

Halo LED Lighting™

All Acrylic Shell Colors

Accenture™ Designer Cabinet

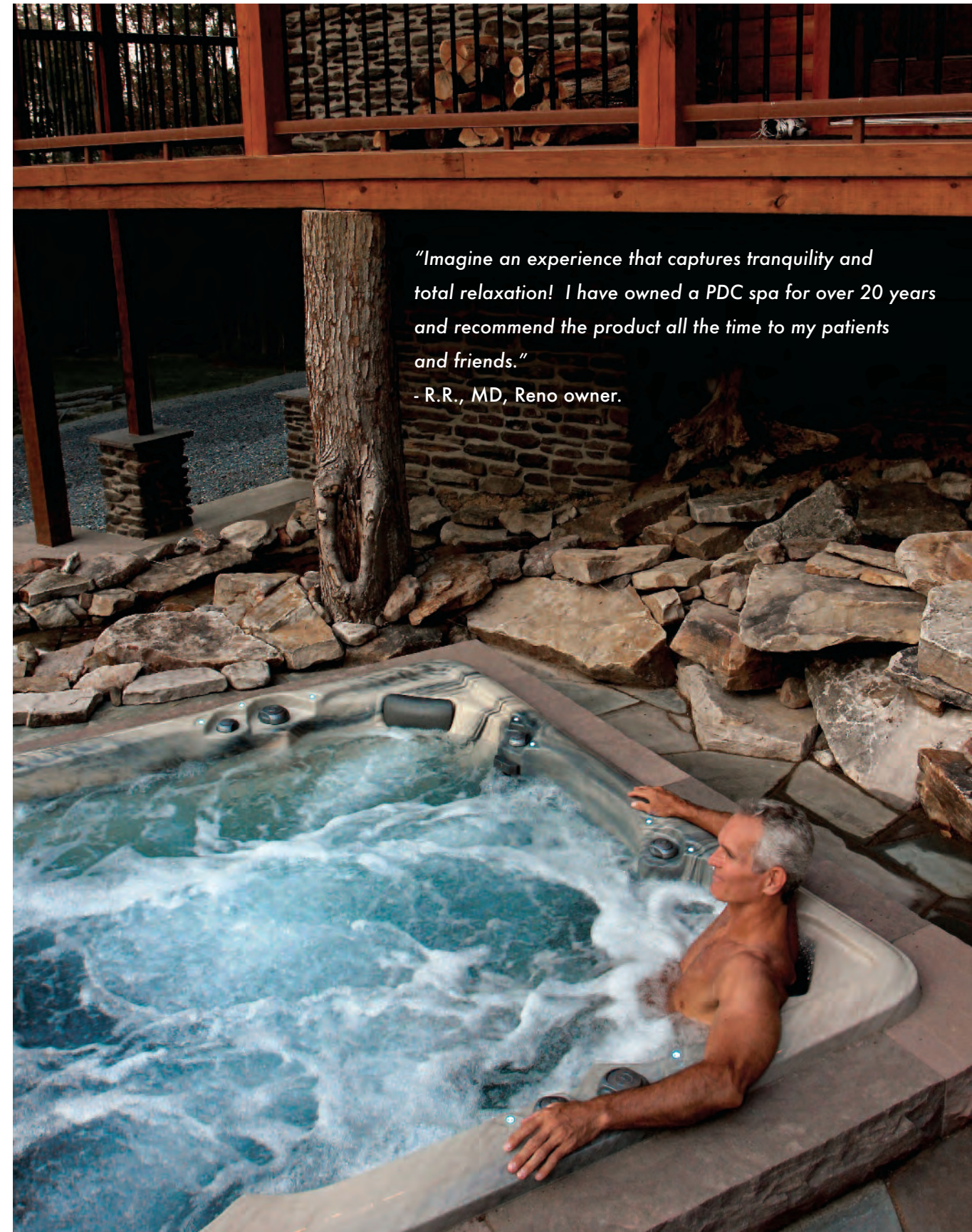
Optional Features

in.Touch2 Wireless Control

in.Clear Sanitation System

SoundStream™ Audio System

Allure2™ LED Lighting



"Imagine an experience that captures tranquility and total relaxation! I have owned a PDC spa for over 20 years and recommend the product all the time to my patients and friends."

- R.R., MD, Reno owner.



premium Series

Maximum water action, dependable operation and high style in the Premium Series spas, designed for the savvy minded buyer. In addition to the standard PDC Spas features like the cost saving TemperLok™ heat trapping design, reliable and convenient PowerFlo™ filtration and exceedingly strong spa shell construction, these six exceptionally comfortable spa designs will deliver fun and relaxation for years on end.

Premium Enhanced Performance

in.k500 Control Center	TemperLok™ & TemperBase™
Multi-Action Jet System	Prism LED Lighting™
EverPure™ Ozone w/EverLite™	(2) Cascading Water Spouts
25 Year Structural Warranty	PowerFlo™ Filtration
UltraMassage™ Selector	

Premium Exclusive Add-Ons

AccuLok™ Cover	in.Touch2 Wireless Control
SoundStream™ Audio System	



PermaWood™ Cabinet



Cascading Water Spout Duo



in.k500 Control Center



Welcoming and inviting, the Barbados is meant to be shared with friends and family. This spacious model features seven wide, open seats with 62 therapy jets and a private recliner style corner seat. A relaxing backyard retreat at an irresistible price.

Model Specs

7 Seats

94" x 94" x 39"

650 Gallons, 2,460 Liters

775 lbs, 352 kg. (Dry)

5,975 lbs, 2,710 kg. (Wet)

62 Reflection Stainless Steel Jets

UltraMassage™ Selector

(2) Pumps 8 HP Peak (4HP Continuous)



Barbados

Standard Features

(2) Cascading Spouts

in.k500 Digital Control

TemperLok™ & TemperBase™

Deluxe Thermal Cover

PowerFlo™ Filtration

EverPure™ Ozone w/EverLite™

Prism LED Lighting™

Select Acrylic Shell Colors

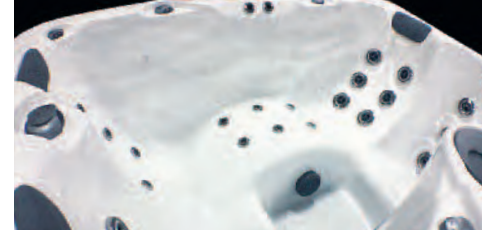
Optional Features

in.Touch2 Wireless Control

SoundStream™ Audio System

AccuLok™ Cover

Additional Acrylic Color Choices



The Carmel is the answer if you're short on space. Small on size but large on features, the Carmel model offers a reversible lounge and two contoured extra deep bucket seats. This model delivers lower back muscle and full leg therapy.

Model Specs

3 Seats

60" x 84" x 33"

220 Gallons, 832 Liters

575 lbs, 261 kg. (Dry)

2,335 lbs, 1,059 kg. (Wet)

28 Reflection Stainless Steel Jets

UltraMassage™ Selector

(1) Pump 4 HP Peak (2HP Continuous)



Carmel

Standard Features

(2) Cascading Spouts

in.k500 Digital Control

TemperLok™ & TemperBase™

Deluxe Thermal Cover

PowerFlo™ Filtration

EverPure™ Ozone w/EverLite™

Prism LED Lighting™

Select Acrylic Shell Colors

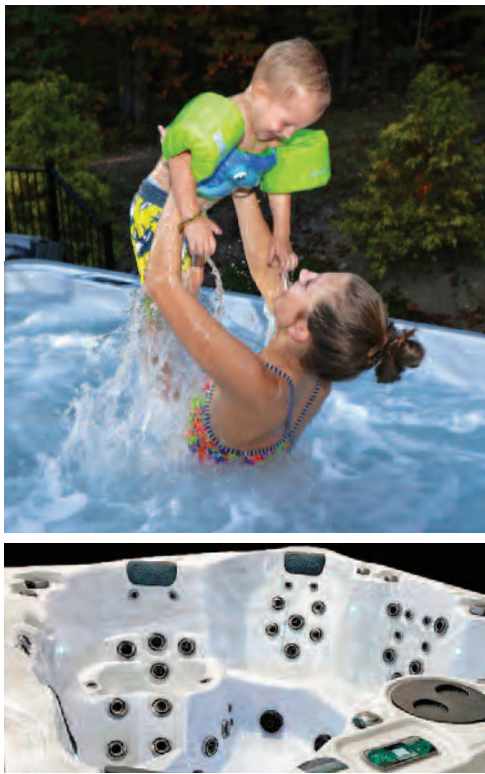
Optional Features

in.Touch2 Wireless Control

SoundStream™ Audio System

AccuLok™ Cover

Additional Acrylic Color Choices



Immerse yourself in the warm waters of the Catalina. Enjoy a variety of open or body hugging seating, including a deep seated lounge fit with wrist and foot massage jets. Relax in high style with 54 targeted therapy jets.

Model Specs

5 Seats

90" x 79" x 37"

325 Gallons, 1,230 Liters

695 lbs, 315 kg. (Dry)

3,295 lbs, 1,495 kg. (Wet)

54 Reflection Stainless Steel Jets

UltraMassage™ Selector

(2) Pumps 8 HP Peak (4HP Continuous)



Catalina

Standard Features

(2) Cascading Spouts

in.k500 Digital Control

TemperLok™ & TemperBase™

Deluxe Thermal Cover

PowerFlo™ Filtration

EverPure™ Ozone w/EverLite™

Prism LED Lighting™

Select Acrylic Shell Colors

Optional Features

in.Touch2 Wireless Control

SoundStream™ Audio System

AccuLok™ Cover

Additional Acrylic Color Choices



Solitude and tranquility await you in the Denali. This non-lounge hot tub features wide comfort styled open seating. Ample space with seven seats and 61 jets, each seat offers a variation of hydrotherapy jetting for total body rejuvenation.

Model Specs

7 Seats

82" x 82" x 39"

425 Gallons, 1,609 Liters

645 lbs, 293 kg. (Dry)

4,045 lbs, 1,835 kg. (Wet)

61 Reflection Stainless Steel Jets

UltraMassage™ Selector

(2) Pumps 8 HP Peak (4HP Continuous)



Denali

Standard Features

(2) Cascading Spouts

in.k500 Digital Control

TemperLok™ & TemperBase™

Deluxe Thermal Cover

PowerFlo™ Filtration

EverPure™ Ozone w/EverLite™

Prism LED Lighting™

Select Acrylic Shell Colors

Optional Features

in.Touch2 Wireless Control

SoundStream™ Audio System

AccuLok™ Cover

Additional Acrylic Color Choices



The Freeport impresses with ergonomically designed open seats, a wide contoured lounge and captain's chair. Each seat wraps your body with superb hydrotherapy action as 61 therapy jets release stress and melt tension.

Model Specs

- 6 Seats

- 94" x 94" x 39"

- 520 Gallons, 1,968 Liters

- 750 lbs, 340 kg. (Dry)

- 4,910 lbs, 2,227 kg. (Wet)

- 61 Reflection Stainless Steel Jets

- UltraMassage™ Selector

- (2) Pumps 8 HP Peak (4HP Continuous)



Freeport

Standard Features

- (2) Cascading Spouts

- in.k500 Digital Control

- TemperLok™ & TemperBase™

- Deluxe Thermal Cover

- PowerFlo™ Filtration

- EverPure™ Ozone w/EverLite™

- Prism LED Lighting™

- Select Acrylic Shell Colors

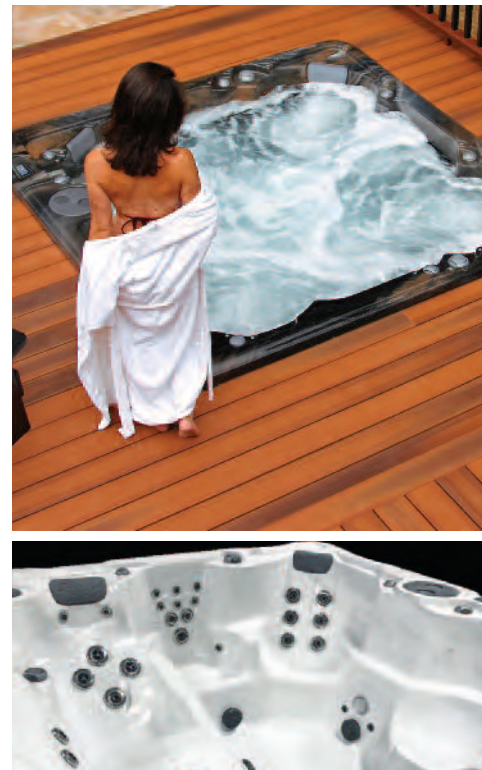
Optional Features

- in.Touch2 Wireless Control

- SoundStream™ Audio System

- AccuLok™ Cover

- Additional Acrylic Color Choices



Escape into a cove of comfort with the Monterey. The embodiment of style and serenity, this handcrafted haven has four contoured seats with armrests and a sculpted lounge. Indulge your senses with 56 sensibly placed therapy jets.

Model Specs

- 5 Seats

- 86" x 86" x 37"

- 375 Gallons, 1,420 Liters

- 625 lbs, 284 kg. (Dry)

- 3,625 lbs, 1,644 kg. (Wet)

- 56 Reflection Stainless Steel Jets

- UltraMassage™ Selector

- (2) Pumps 8 HP Peak (4HP Continuous)



Monterey

Standard Features

- (2) Cascading Spouts

- in.k500 Digital Control

- TemperLok™ & TemperBase™

- Deluxe Thermal Cover

- PowerFlo™ Filtration

- EverPure™ Ozone w/EverLite™

- Prism LED Lighting™

- Select Acrylic Shell Colors

Optional Features

- in.Touch2 Wireless Control

- SoundStream™ Audio System

- AccuLok™ Cover

- Additional Acrylic Color Choices

"We have truly enjoyed our home more since we added a hot tub. Winter, summer, day or night, a warm soak is what we look forward to after a long day. Hands down, our hot tub has been one of our best investments ever!"

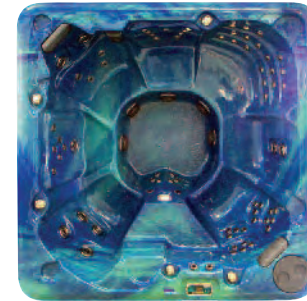
- D.R., Bali owner



Midnight Canyon



*Deep Waters



*Pacific Rim



*Silver Marble



Tuscan Sun



*Sierra Granite



Summer Sapphire



*Champagne Dreams



Uniquely Yours.

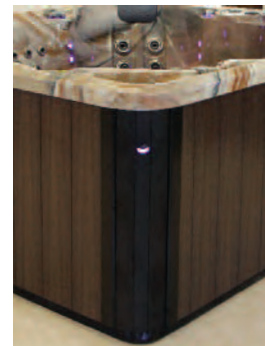
Lustrous Spa Shell Colors

Choose from a selection of Lucite® durable cast acrylic finish colors in either marble with a smooth feel, or granite with texture to the touch.

**Premium Series color choices.*

PermaWood™ Cabinets

Our all-weather, low maintenance, fade and stain resistant PermaWood™ cabinet has the look of real wood grain, in two earth tone colors, Graphite Gray or Espresso Brown. Luxury Series Accenture™ designer cabinet features rich black corner columns.





© 2017 Plastic Development Company, Inc. All rights reserved. Printed in USA. Measurements, specifications, design and colors are subject to change without notice as an ongoing process to further enhance the product. Not all features are available on all products. Log onto www.pdcspas.com for continuing updated product information. International 50HZ models may vary in specifications and features. PDC Spas, Airassage, TemperLok, PowerFlo, SoundStream, Ultra Massage Selector, Halo Lighting, Allure2, Accenture, Prism Lighting, Reflections Jetting, TemperBase, EverPure, EverLite, and MotionGlow are trademarks of Plastic Development Company, Inc. Plastic Development Company, Inc. manufactures under several patents in the United States and Canada. All spas to be installed by a licensed electrician in accordance to all national and local codes. Spa use must be enjoyed within certain safety parameters regarding temperature, pregnancy, medication and alcohol use, to mention a few. Refer to owners manual for detailed guidelines.



Plastic Development Company, Inc
75 Palmer Industrial Road
Post Office Box 4007
Williamsport, PA 17701 USA
800.451.1420
pdcspas.com